

Director's Newsletter

December 2020



The holiday season is a perfect time to reflect on our blessings and seek out ways to make life better for those around us ~Terry Marshall

Dear Parents,

It is hard to believe that December is finally here, and 2020 is coming to an end. As we all prepare for the holiday season, remember to take a moment to slow down and be present. During your preparations, include your children. They can assist with baking, cleaning, and decorating. As they grow older, they may see these as traditions, and you will see them as memories.

As always, please be in touch at any time with questions or concerns.

Kind Regards,
Kim Dunaway

Illness:

This is the season where we expect to see an increase of allergies, colds, and possible flu. As we are finding out, flu and Covid have similar symptoms.

If you are questioning if your child should stay at home, please err on the side of caution, and keep them home. I have included the algorithm provided by VDH that we use as our guidance. If you or your child has been exposed, has a positive test, or a presumptive positive, you must quarantine and notify the school.

We are trusting our families to keep us informed in a timely manner, so we can keep our school community healthy.

Helping Hands: We are requesting donations of Kleenex, baby/hand wipes, disinfecting wipes and paper towels. We appreciate all donations we receive.

Christmas Tree Sale: Scouts BSA Troop 1396 is selling fresh cut Premium Grade Fraser Fir Christmas trees and are in the picnic area.



DATES:

December 1st and 2nd School Spirit Day: wear your St. Matthew's T-shirt!

December 3rd and 4th: Fire Drill

December 21st – January 1st: Day School will be closed in observance of the Christmas Holiday

January 4th: Day School classes resume

January 28th and 29th: Parent Teacher Conferences

January 28th: Registration begins

Adopt-A-Family

In past years, we have gathered gently used toys, unfortunately we are unable to and we have been asked to adopt a family to receive a holiday meal. We will be putting together food bags so these families will have a holiday meal. We are looking for the following donations per class:

- 1 can 14 or 15 oz green beans
- 1 can 16 oz sweet potatoes
- 1 can 14 oz cranberry sauce
- 1 box 6 oz dry stuffing
- 1 box 5 oz instant scallop or au gratin potatoes
- 1 dozen Christmas cookies
- 1 can, large (16 oz/ 8 count) refrigerator rolls
- 1 frozen pie, apple, or cherry.

A gift card to Giant to cover the cost of a ham or turkey for each of these families is being provided by the Social Ministry committee of St. Matthew's Lutheran Church.

Car Temperatures:

As cooler temperatures are moving in and you are warming your vehicle, please keep in mind that a warm car, and child bundled up in a coat will raise their body temperatures. At carline we are seeing these elevated temperatures, and are asking that once your car is warmed, that you lower the temperature, so your child's body temperature will regulate to a normal temperature prior to being admitted to school. This will also minimize any delays during the morning car line.

For your
Calendar

12/1 and 12/2
Spirit Day

12/21-1/1
Christmas Break

1/4
Classes Resume

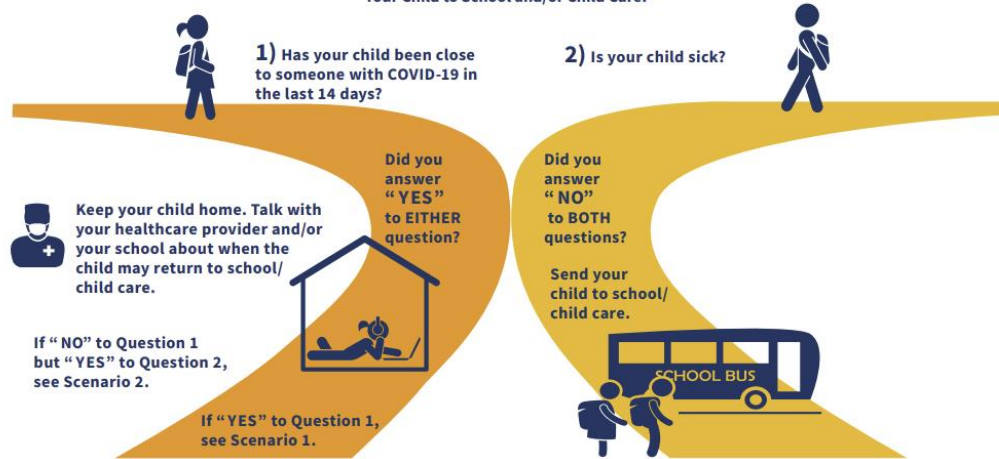
1/28 and 1/29
Parent Teacher
Conferences

1/28
In-house Registration begins

For Parents and Guardians

When Can I Send My Child to School and/or Child Care?

Answer These Two Questions Every Day Before Sending Your Child to School and/or Child Care:



www.vdh.virginia.gov/content/uploads/sites/24/2020/08/Evaluating-Symptoms-in-a-Child.pdf

VDH Algorithm for Evaluating a Child with COVID-19 Symptoms or Exposure – For Separate Audiences APPENDIX

Scenarios for Evaluating a Child Based on COVID-19 Exposure

